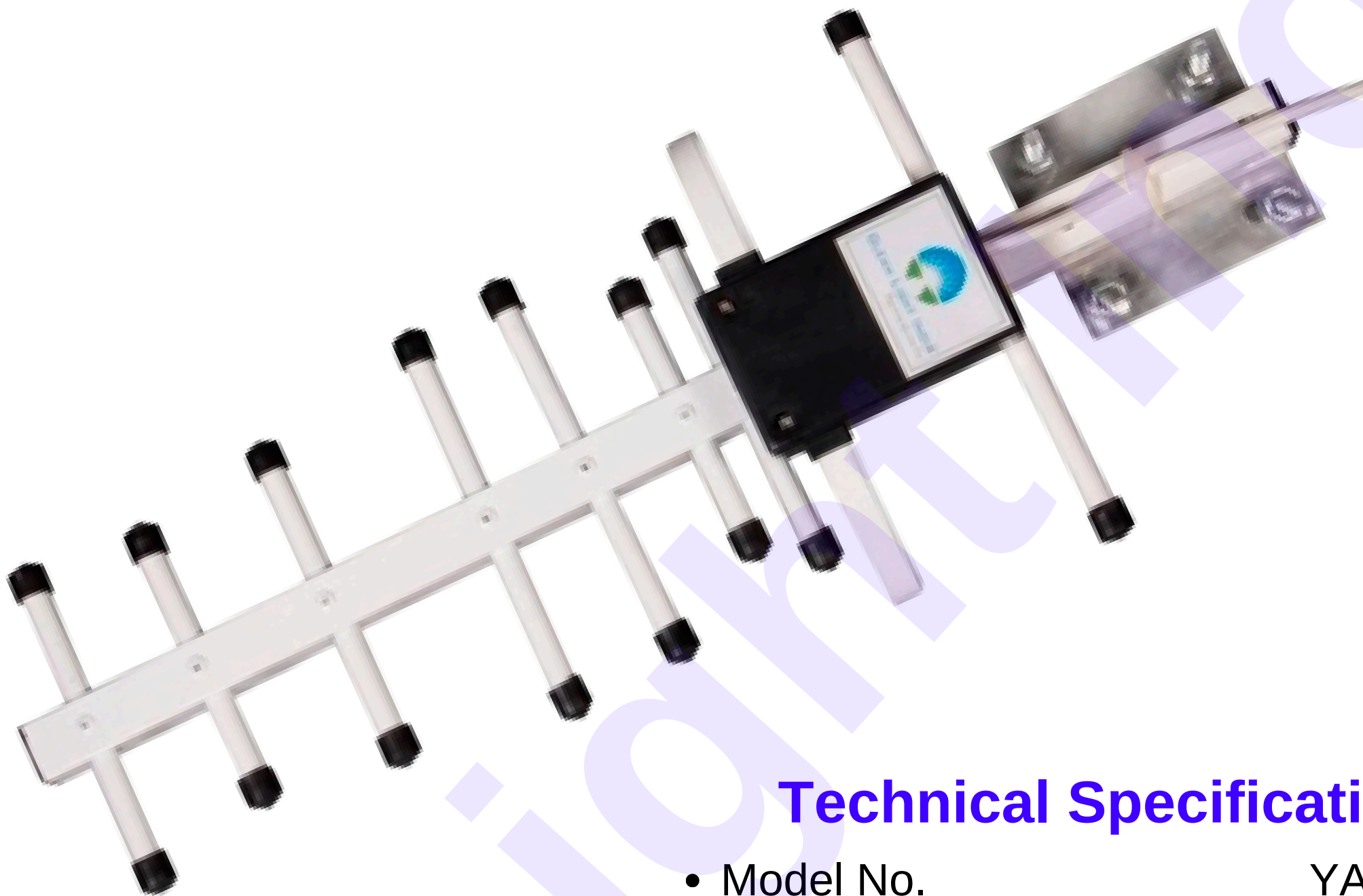


YAGI ANTENNA 9 Dbi



An ISO 9001: 2015 Certified Company



Technical Specifications

• Model No.	YAGOD2G090
• Frequency Range	698-960/1710-2700 MHz
• Beam Width	60±50
• Polarization	Vertical
• Gain	9 DBI
• Lightning Protection	Direct Ground
• VSWR	<1.5:1
• Maximum Input Power	100W
• Impedance(ohm)	50
• Connector Type	SMA M/N F/ Customized
• Operating Temp	-40 to 55 C
• Mounting	Clamp Type / Pole Mount
• Cable Length	300 MM / Customized
• Cable	RG58
• Compliances	CE compliant
• ROHS	ROHS Compliant

FEATURES

- Wide Frequency Range
- Light Weight
- High gain
- Easy to Install
- Vertical or Horizontal Polarization
- All-Weather Operation
- Best for Outdoor applications.

[Click Here](#)



 [Installation Guidance](#)

CALL OR  **+91-8800386366**

Follow Us For More Updates **GLEAMLIGHTINDIA** /     

Info@gleamlightindia.com / www.gleamlightindia.in / www.gleamindia.com

12B Block -A, Behind Kanishka Garden, Amar Colony Main Rohtak Road Nangloi, New Delhi, Delhi 110041



YAGI ANTENNA 9 Dbi



An ISO 9001: 2015 Certified Company

High Quality Aluminium Structure



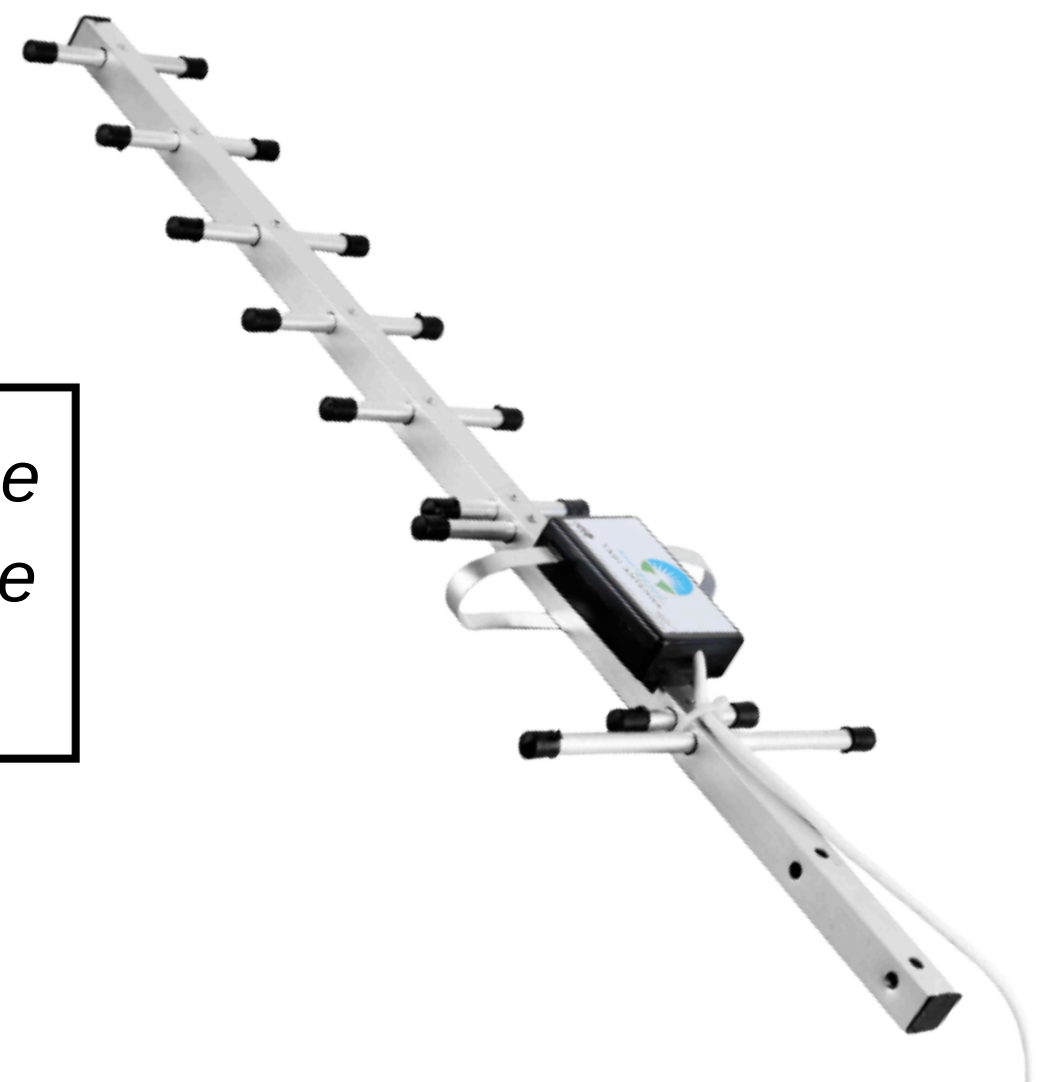
The connections between elements and other components is secure and well-constructed to minimize losses and ensure stable performance over time.

The unique design of the yagi antenna feed which works as matching device to keep the VSWR low resulting in increased efficiency of the yagi with reflector.



The antenna is also be robust and reliable, with stable performance over time and in various environmental conditions.

A GSM Yagi antenna is a useful tool for improving the reliability and coverage of GSM networks, and can be used in a variety of applications.



CALL OR  **+91-8800386366**

Follow Us For More Updates **GLEAMLIGHTINDIA** /     

Info@gleamlightindia.com / www.gleamlightindia.in / www.gleamindia.com

12B Block -A, Behind Kanishka Garden, Amar Colony Main Rohtak Road Nangloi, New Delhi, Delhi 110041

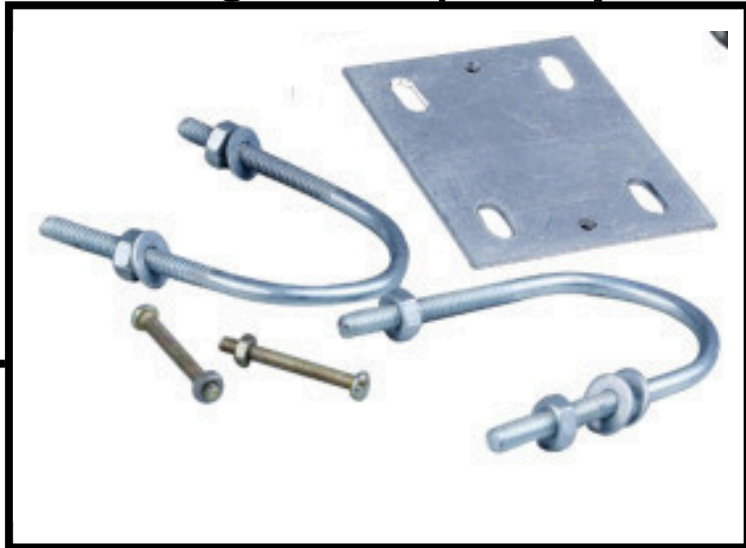


YAGI ANTENNA 9 Dbi



An ISO 9001: 2015 Certified Company

Antenna
Mounting Clamp

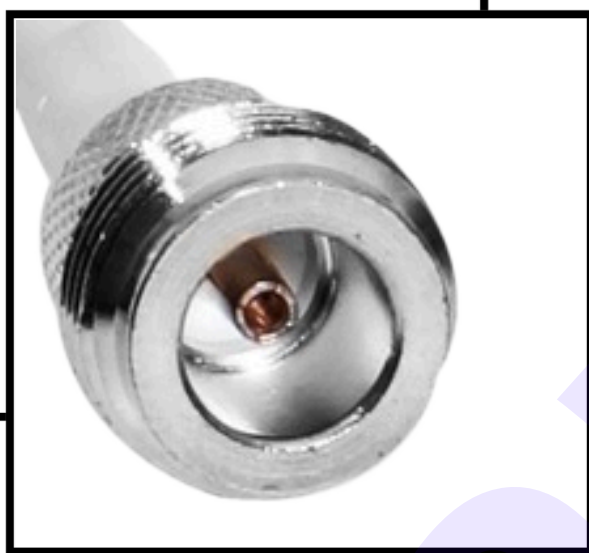


The clamps are designed to securely fasten the antenna to the support structure.



Cable
Rg 58

N Female



SMA M



Customized Connector

CALL OR  +91-8800386366

Follow Us For More Updates     

Info@gleamlightindia.com / www.gleamlightindia.in / www.gleamindia.com

12B Block -A, Behind Kanishka Garden, Amar Colony Main Rohtak Road Nangloi, New Delhi, Delhi 110041

